



# SCIENCE FICTION AS A GUIDE TO INVESTMENT OPPORTUNITIES

MATTHEW SANT

The background is a blue gradient with faint technical diagrams and circular patterns. On the right side, there are several concentric circles and arcs, some with tick marks and numbers (100, 110, 120, 130, 140, 150, 160, 170, 180, 190, 200). There are also dashed lines and arrows indicating movement or flow. The overall aesthetic is clean and modern, suggesting a focus on technology or innovation.

WHAT'S THE NEXT BIG IDEA?

WIRED

TE



cityFALCON

engadget

techradar.



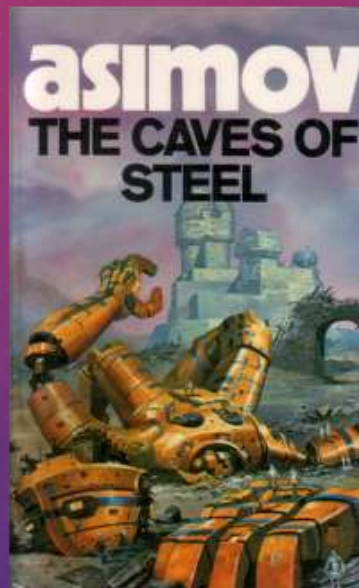
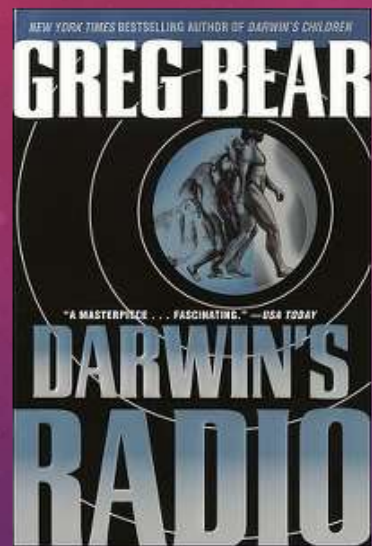
Association for  
Computing Machinery



**IEEE**



**u s e n i x**  
ASSOCIATION



WHAT'S SCIENCE FICTION?

FICTION + SCIENCE









# LE VOYAGE DANS LA LUNE



★ "STAR FILM" ★  
Geo Méliès. Paris



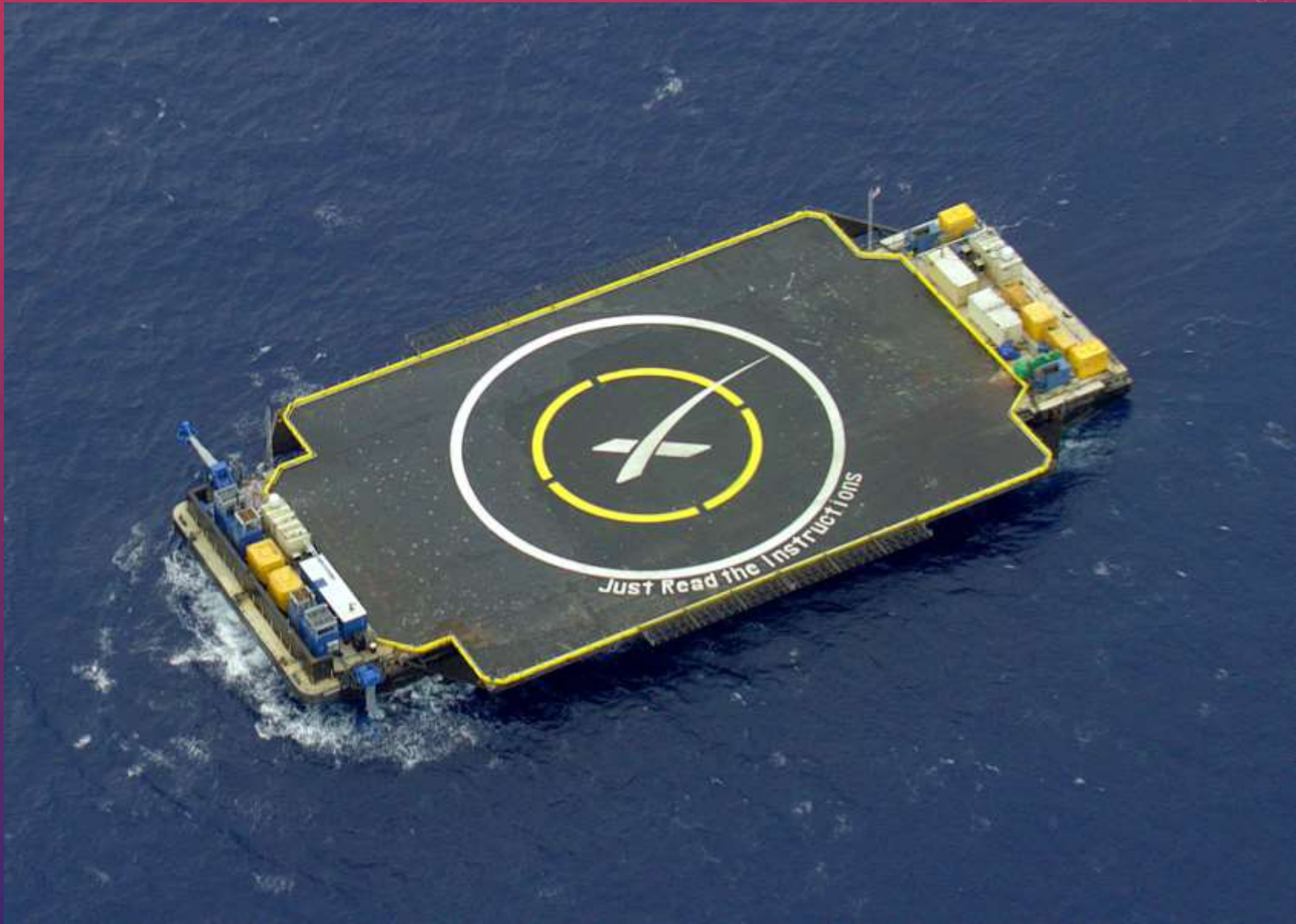
# FRAU *im* MOND

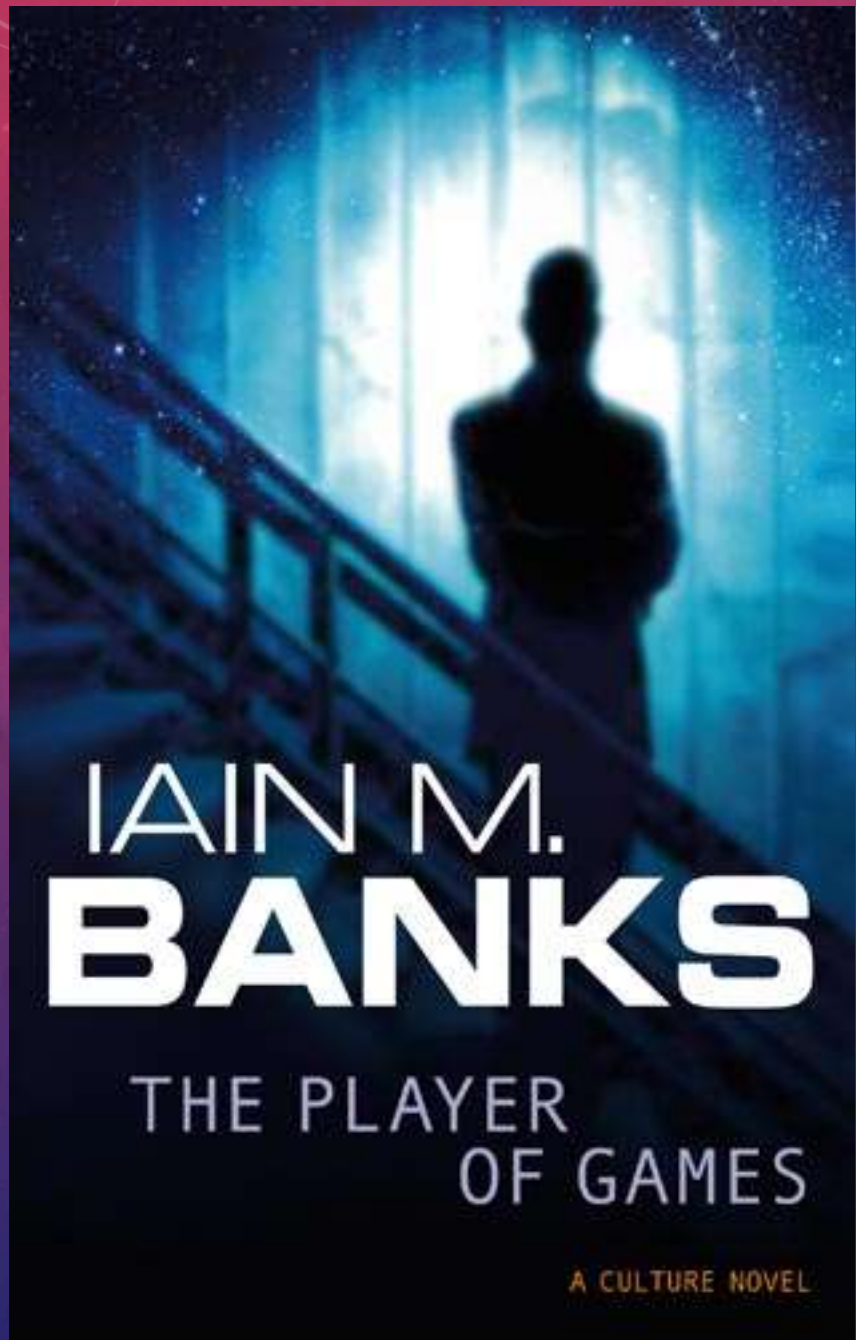
EIN FILM VON  
**FRITZ LANG**



MANUSKRIFT: THEA v. HARBOU





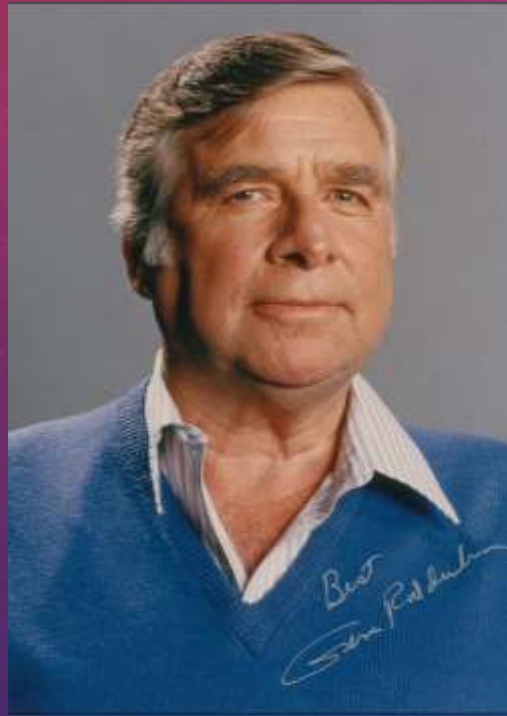


IAIN M.  
**BANKS**

THE PLAYER  
OF GAMES

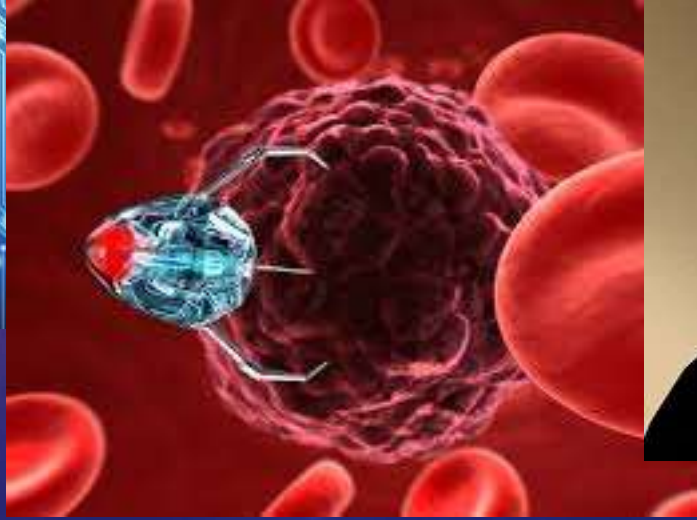
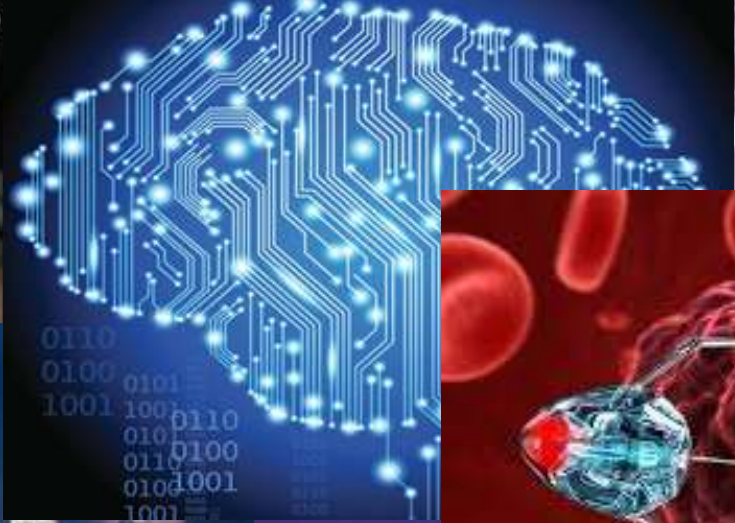
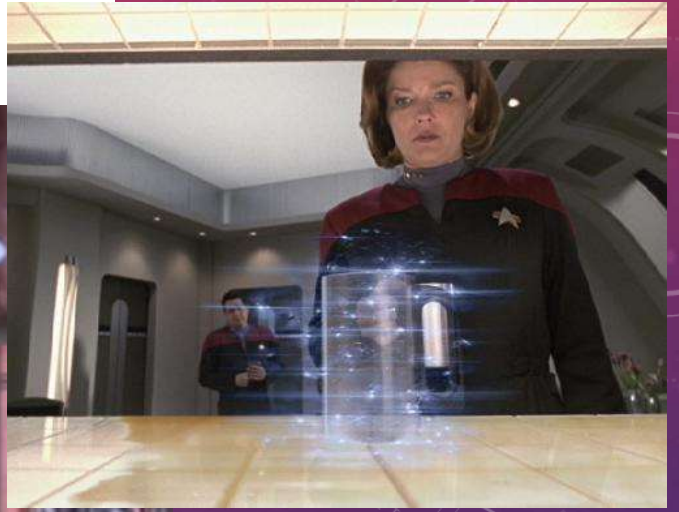
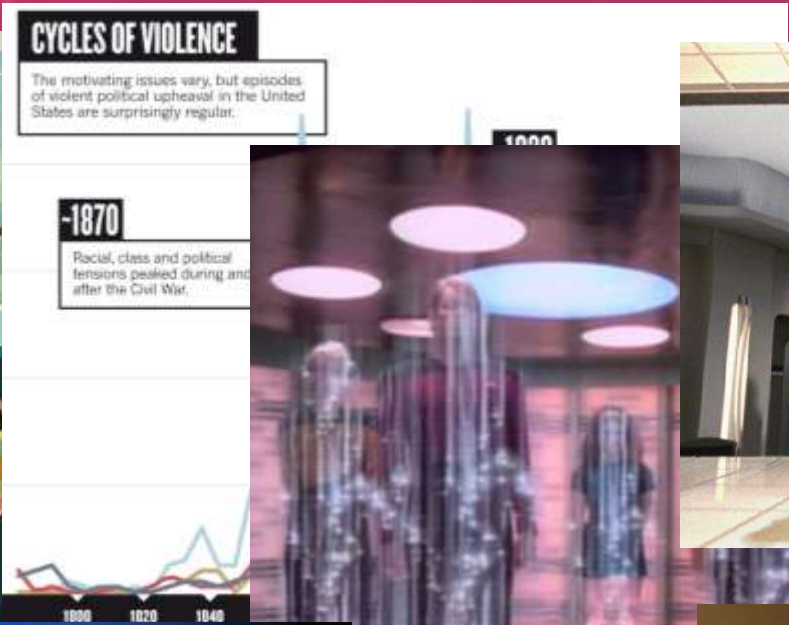
A CULTURE NOVEL

# MY SELECTION





  
**KEEP  
CALM  
AND  
OBEY  
THE  
THREE  
LAWS**





# ROBOTS

BostonDynamics



rethink  
robotics.®



SPACE TRAVEL

SPACEX

BLUE ORIGIN

ROCKET LAB

BIG DATA AND MACHINE LEARNING

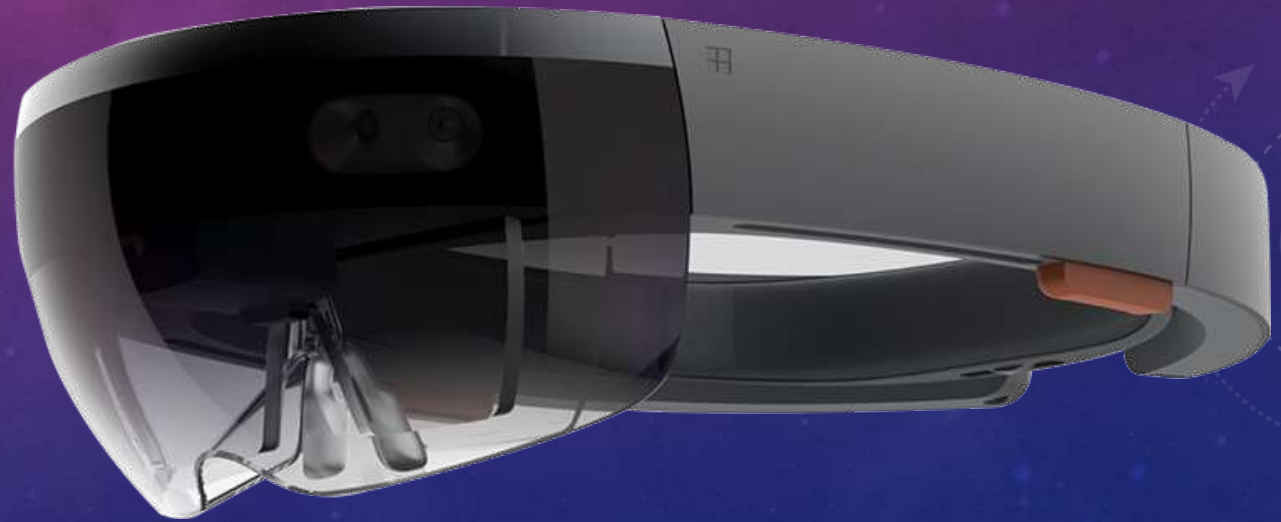
splunk > Pivotal™

Palantir

# TELEPORTATION



Microsoft



# REPLICATION



**3DSYSTEMS®**



**carbon3D™**

